



FEBRUARY 2002

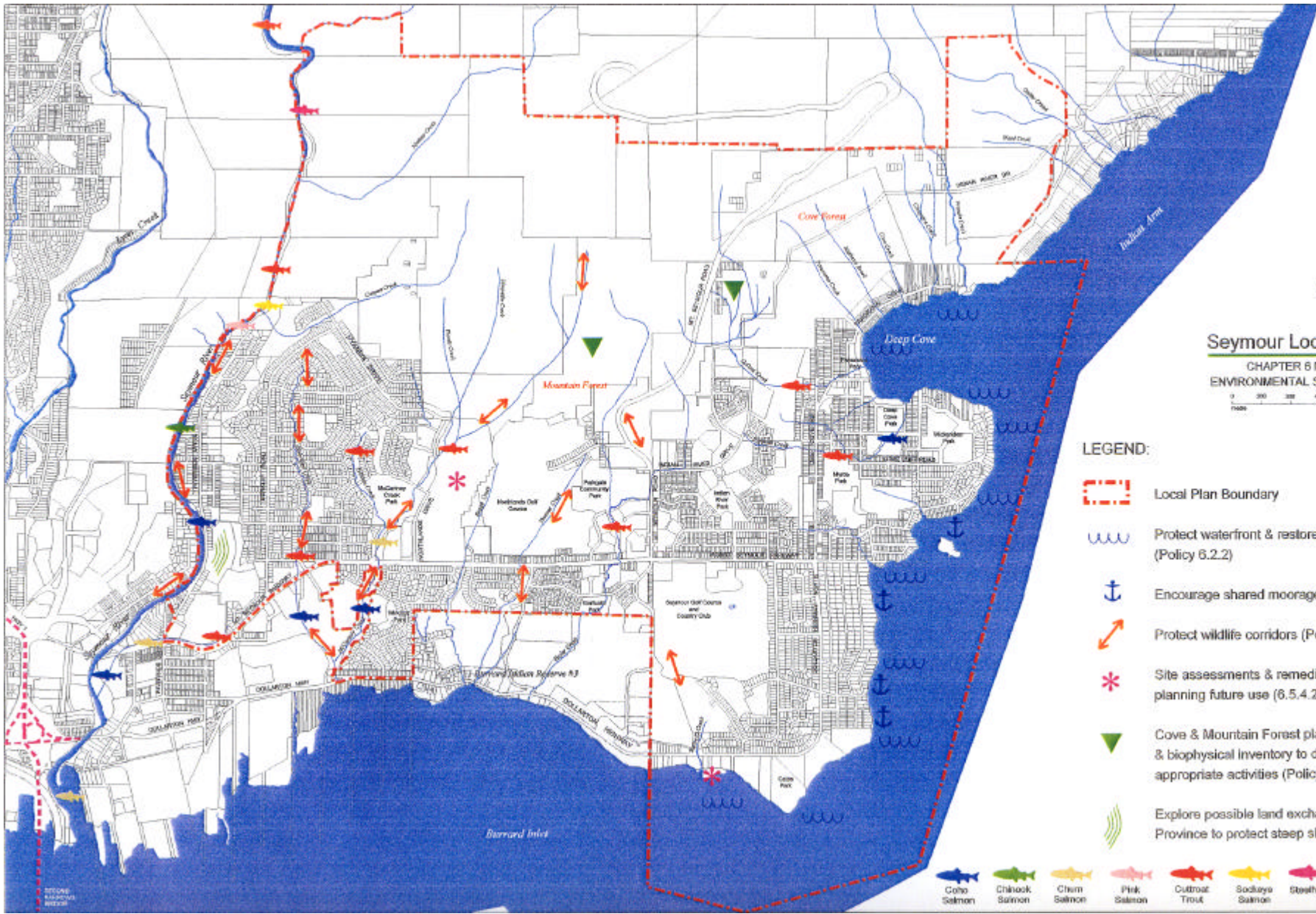
Seymour Local Plan

CHAPTER 6 MAP
ENVIRONMENTAL STRATEGY



LEGEND:

- Local Plan Boundary
- Protect waterfront & restore shoreline (Policy 6.2.2)
- Encourage shared moorage (Policy 6.2.3.3)
- Protect wildlife corridors (Policy 6.3.2)
- Site assessments & remediation plans for planning future use (6.5.4.2, 6.5.5.1)
- Cove & Mountain Forest planning studies & biophysical inventory to determine appropriate activities (Policy 6.3.3.2)
- Explore possible land exchange with Province to protect steep slopes.



STRONG BUILDINGS NETWORK